

# Haverigg Primary News

*Friday 3rd July 2026*

**End of Term - Friday 17th July 1.15pm**  
Buses have been arranged to coincide with this time. Please can parents of taxi children ensure the taxi companies know of the earlier pick up.

**END OF TERM**



Thank you all for supporting our **Lunch with Loved Ones** event. We hope you enjoyed your delicious lunches cooked by the Lighthouse Centre team, the children were so excited to have you there to join them. We hope to do it again next year...once Mrs Knowles has recovered!

**On Monday 13th July**, the Lighthouse Centre will be holding a **Bingo** fundraiser for the school children. This will take place within school hours and will cost £1 per child to take part. Envelopes will go home with children early next week. Thank you.

**SCHOOL REPORT**

School reports are scheduled to be emailed to parents next Friday. If you have not already done so, please complete the MS Forms questionnaire to confirm your preferred email address. Thank you.



Some of our brass players will be taking part in a Royal Northern College of Music concert at Millom Palladium, 6.30pm on Wednesday 8th July. It would be lovely to see some of you there to support. Details on page 4.

## *Congratulations to this week's Lighthouse Winners*

<b>Reception Miss Blackburn</b>	<b>Cora</b> - for being all round amazing. Your confidence has grown and grown this year and it has been lovely this week to see you so confident with all of your learning.
<b>Year 1 Miss Leece</b>	<b>Chrissie</b> - for being a fantastic member of our class. All year, you have shown enthusiasm with your learning, how kind you are and that you always show all our school values. You are a superstar Chrissie!
<b>Year 2 Mrs Narongchai</b>	<b>Imogen</b> - for always being so enthusiastic, switched on and ready to give everything a go. You are a superstar Immy and I have absolutely loved teaching you on Fridays this year!
<b>Year 3 Mr Knowles</b>	<b>The Whole Class</b> - for their super artwork and geography whilst I have been out on trips. They were also curious, engaged and polite on our school trip. Thank you.
<b>Year 4 Miss Usher</b>	<b>Demi</b> - for blowing us away with her wonderful writing . Demi has absolutely worked her socks off this week writing her story with a twist and she should be very proud of herself. Well done Demi, keep it up.
<b>Year 5 Miss Marinovich</b>	<b>Dolly</b> - for her kindness. She is always thoughtful and considerate towards others and her gentle nature helps make our classroom a happy place. Dolly your kindness makes a real difference every day. Thank you and don't ever change!
<b>Year 6 Miss Musgrave</b>	<b>Sophie, Libbie, Emmie-Mae and Faith</b> - for all your help with the Lunch for Loved Ones this week - you were fantastic!
<b>Music Award Mrs Cullen</b>	<b>All of the brass group playing in the concert on Wednesday</b> - you have all worked so hard and it will be a fantastic concert!

At Haverigg Primary School we take the safety and welfare of your children very seriously. If you have any concerns regarding the safety and wellbeing of any children at Haverigg school please speak to Mrs Narongchai (our designated safeguarding leader), or Miss Musgrave / Mrs Red-head, (our deputy safeguarding leaders), in her absence.



# Year 3



On Thursday, Year 3 visited Muncaster Castle for a Roman workshop, which gave them lots of information about our local area during Roman times. They also enjoyed the bird show, used maps to find their way around the grounds and used the natural habitat to create some artwork.



The Science Fair last Friday was thoroughly good fun! The Year 4 and 5 children loved exploring all things science, from discovering fascinating facts about bodily functions, including snot and even the different "flavours" of fart, to taking part in lots of hands-on investigations. The teachers were definitely put through their paces as they joined in with demonstrations, much to the children's delight. The robotic dogs were a huge hit too and everyone enjoyed practicing their own downward-facing dog alongside them. It was a fantastic day full of curiosity, laughter and brilliant learning for all.

## SCIENCE FAIR



# Presentation Assemblies 2026

## Friday 10th July 2026 - In the school hall

Reception & Year 1	9.00am - 10.00am (2 guests per family)
Year 2 & 3	10.30am - 11.30am (2 guests per family)
Year 4 & 5	1.15pm - 2.15pm (2 guests per family)
Year 6	2.30pm onwards (4 guests per family)



We are finding lots of children bringing in home packed lunches on days where they have ordered a school lunch. Please do not order a meal for your child if you intend for them to have a home packed lunch, if they do this, children will be given the ordered school meal and the home packed lunch will be kept in the fridge until home time. Also, we are finding children wanting to swap meals on the day, unfortunately, this is not possible, please ensure children know and are happy with their meal choices. Thank you for your co-operation with this.

### Next week's important dates:

- Monday 6th** - Year 6 Beach BBQ
- Tuesday 7th** - Year 2 trip to Lakeland Maize Maze
- Wednesday 8th** - Advanced Brass Group at Millom Palladium
- Friday 10th** - Presentation Assemblies  
School Disco

## Marbleous

### House point winners:

Olivia, Jack Yr 4, Eli, Florence, Amelia, Harry R, Demi x 2, Toby, Aaron, Bertie, Lucas, Eva, Elliot, Charley, Ollie, Joel, Libby C, Grayson, Noah, Annie Yr 2, Dorothy, Luna, Anderson, Kobey-Lee x 2, Harry F x 2, Kieron, Tommy, Ellie, Emily, Faith, Ralphie, Ernie, Wyatt, Faith, Sophie and Emmie-Mae.

**Well done everyone,  
you are all  
Marbleous!**

## Attendance Matters



**What is considered good attendance?** Regular and punctual attendance is essential for effective learning, promoting positive relationships and developing good attitudes to education. **A child's attendance at school is expected to be 96% and above.** Anything that is below this needs to be addressed by school to ensure attendance improves. We need to ensure that all children attend school regularly as it is important for friendships and academic progress/success.

### Key daily timings:

- 8:50 to 9:00** → Register takes place
- After 9:00** → Late mark in register
- After 9:30** → Unauthorised ab-

### Weekly Attendance Report

Reception	99%
Year 1	98%
Year 2	96%
Year 3	99%
Year 4	99%
Year 5	98%
Year 6	92%



WED JUL 8 - 6.30PM  
MILLOM PALLADIUM THEATRE

# RNCM Engage West Cumbria Brass Band Concert

Holborn Hill Royal Brass band  
Holborn Hill Schools Section Band  
Haverigg Primary School Brass Ensemble  
RNCM 'Cresswell Brass Quintet'

**FREE ENTRY**  
Complimentary Tea and cakes

**MMS**  
MUSIC MAKING SOCIETY

**RNCM  
ENGAGE CUMBRIA**  
BY COMMUNITY USE



RNCM  
ROYAL NORTHERN COLLEGE OF MUSIC



**RNCM**  
ROYAL NORTHERN  
COLLEGE of MUSIC

# Haverigg School

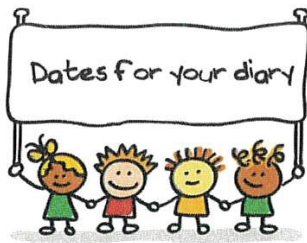


Friday 10<sup>th</sup> July 2026

6pm – 7.30pm

At Haverigg School

**Admission: £2.50, £4 for 2 siblings, £5 a family**



# HAVERIGG PRIMARY SCHOOL

## DIARY DATES

(updated 5<sup>th</sup> June 2026)

### June 2026

Monday 1st	Back to school
Wednesday 3 <sup>rd</sup> – 5th	Year 6 London residential trip
Tuesday 9th	Year 6 STEAM event at Beggar's Theatre
Monday 15 <sup>th</sup>	Year 1 trip to Muncaster
Thursday 18th	Sports Day (weather permitting)
Friday 19th	Year 5 day at Millom school
Wed 24 <sup>th</sup>	Year 5 trip to Low Bank Ground Coniston
Friday 26 <sup>th</sup>	Years 4 and 5 to Science Fayre at Whitehaven
WC 29th	LCL Lunch with Loved Ones
Tuesday 30th	Year 6 John Ruskin Induction Day
	Parent Open Evening for new Reception intake (September 2026) 5pm

### July 2026

Thursday 2nd	Year 3 trip to Muncaster
	Year 6 Transition Day at Millom School
Friday 3rd	Year 6 Transition – Den Building at Blackcombe School
Monday 6th	Year 6 Beach Barbeque
Tuesday 7th	Year 2 trip to Lakeland Maze
Wednesday 8th	Advanced Brass Group at Millom Palladium
Friday 10th	Presentation Assemblies
	FoHS School Disco
Monday 13th	Lighthouse Centre BINGO fundraiser for children (within school hours)
Tuesday 14th	Author Visit – Tom Palmer
Thursday 16th	Year 4 trip to Low Bank Ground Coniston
	Year 6 Beach Barbeque (reserve date)
Friday 17th	End of term (1.15pm finish)

## Haverigg School 3 Week Menus from 20<sup>th</sup> April 2026



Week 1		
<b>Monday</b>	Pasta Bolognese, Garlic Bread and Sweetcorn	Chocolate Crunch and Vanilla Sauce
<b>Tuesday</b>	Chunky Chicken in a Tomato Sauce with Rice and Naan Bread	Meringue and Fruit Salad
<b>Wednesday</b>	Roast Pork, Yorkshire Pudding, Mash / Pasta and Vegetables	Gingerbread and Custard
<b>Thursday</b>	Battered or Plain Chicken Fillet Baguette with Diced Potatoes, Carrot and Cucumber Sticks	Victoria Sponge Cake
<b>Friday</b>	Fishy Ships, Chips, Baked Beans / Peas	Fruit Jelly and Ice-cream
	Daily: Jacket Potato with Butter/Cheese/Beans/Tuna OR Sandwich – Cheese/Ham/Tuna/Salad	Daily: Fruit Yoghurts Fresh Fruit
Week 2		
<b>Monday</b>	Mild Chicken Korma, Rice and Naan Bread	Lemon Drizzle Cake
<b>Tuesday</b>	Arrabiata Pasta Sauce (cheese optional), Crusty Bread, and Green Salad	Shortbread and Drink of Milk
<b>Wednesday</b>	Roast Beef, Yorkshire Pudding, Mash / Pasta and Vegetables	Chocolate Pear Marble Cake and Custard
<b>Thursday</b>	Pizza Wrap, Red Pesto Pasta and Sweetcorn	Melting Moment Biscuit
<b>Friday</b>	Fishy Ships, Chips, Beans / Peas	Waffle with Fruit Salad and Ice-cream
	Daily: Jacket Potato with Butter/Cheese/Beans/Tuna OR Sandwich – Cheese/Ham/Tuna/Salad	Daily: Fruit Yoghurts Fresh Fruit
Week 3		
<b>Monday</b>	Sausage Baguette, Wedges, Carrot and Cucumber Sticks	Iced Sponge Cake
<b>Tuesday</b>	Pasta in a sauce (cheese optional), Garlic Bread and Salad	Scotch Pancake with Bananas and Ice-cream
<b>Wednesday</b>	Roast Chicken with Stuffing, Mash / Pasta and Vegetables	Chocolate Orange Cake and Custard
<b>Thursday</b>	Meatballs in Gravy, Mash / Pasta and Sweetcorn	Fruit Scone with Jam (optional)
<b>Friday</b>	Fishcake, Chips, Beans / Peas	Chocolate Chip Cookie and Milk
	Daily: Jacket Potato with Butter/Cheese/Beans/Tuna OR Sandwich – Cheese/Ham/Tuna/Salad	Daily: Fruit Yoghurts Fresh Fruit

**Please note: any children with a food intolerance can still order the main meal and pudding. If applicable, the kitchen staff will adjust the meal according to their intolerance e.g. dairy.**

**Thank you**

# HAVERIGG PRIMARY SCHOOL

## 2026

JANUARY						
S	M	T	W	Th	F	S
				1	2	3
4	5	6	7	8	9	10
11	12	13	14	15	16	17
18	19	20	21	22	23	24
25	26	27	28	29	30	31

FEBRUARY						
S	M	T	W	Th	F	S
1	2	3	4	5	6	7
8	9	10	11	12	13	14
15	16	17	18	19	20	21
22	23	24	25	26	27	28

MARCH						
S	M	T	W	Th	F	S
1	2	3	4	5	6	7
8	9	10	11	12	13	14
15	16	17	18	19	20	21
22	23	24	25	26	27	28
29	30	31				

APRIL						
S	M	T	W	Th	F	S
			1	2	3	4
5	6	7	8	9	10	11
12	13	14	15	16	17	18
19	20	21	22	23	24	25
26	27	28	29	30		

MAY						
S	M	T	W	Th	F	S
					1	2
3	4	5	6	7	8	9
10	11	12	13	14	15	16
17	18	19	20	21	22	23
24	25	26	27	28	29	30
31						

JUNE						
S	M	T	W	Th	F	S
	1	2	3	4	5	6
7	8	9	10	11	12	13
14	15	16	17	18	19	20
21	22	23	24	25	26	27
28	29	30				

JULY						
S	M	T	W	Th	F	S
			1	2	3	4
5	6	7	8	9	10	11
12	13	14	15	16	17	18
19	20	21	22	23	24	25
26	27	28	29	30	31	

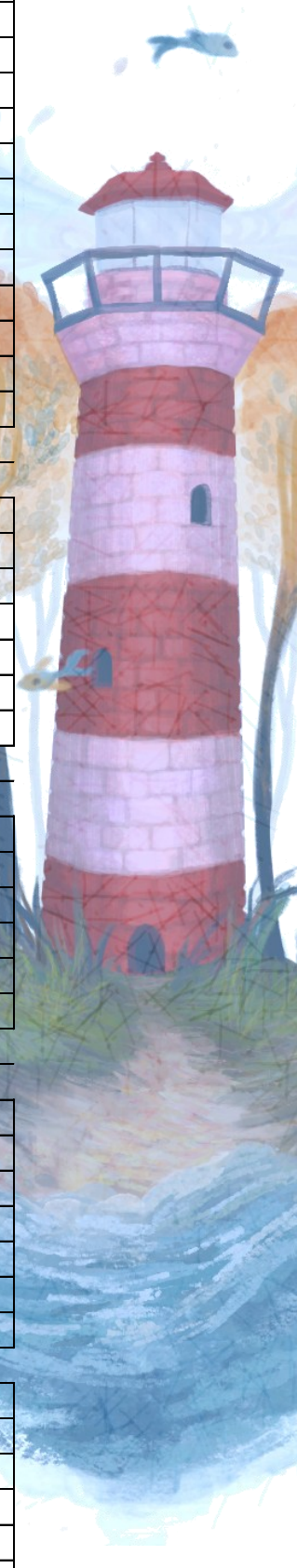
AUGUST						
S	M	T	W	Th	F	S
						1
2	3	4	5	6	7	8
9	10	11	12	13	14	14
16	17	18	19	20	21	22
23	24	25	26	27	28	29
30	31					

SEPTEMBER						
S	M	T	W	Th	F	S
		1	2	3	4	5
6	7	8	9	10	11	12
13	14	15	16	17	18	19
20	21	22	23	24	25	26
27	28	29	30			

OCTOBER						
S	M	T	W	Th	F	S
				1	2	3
4	5	6	7	8	9	10
11	12	13	14	15	16	17
18	19	20	21	22	23	24
25	26	27	28	29	30	31

NOVEMBER						
S	M	T	W	Th	F	S
1	2	3	4	5	6	7
8	9	10	11	12	13	14
15	16	17	18	19	20	21
22	23	24	25	26	27	28
29	30					

DECEMBER						
S	M	T	W	Th	F	S
		1	2	3	4	5
6	7	8	9	10	11	12
13	14	15	16	17	18	19
20	21	22	23	24	25	26
27	28	29	30	31		



Inset

Holiday dates Spring Term starts 5th January 2027



**HAVERIGG PRIMARY SCHOOL**

**Atkinson Street**

**Haverigg**

**Cumbria LA18 4HA**

**Tel: 01229 772502**

**e-mail: [admin@haverigg.cumbria.sch.uk](mailto:admin@haverigg.cumbria.sch.uk)**

**[www.haverigg.cumbria.sch.uk](http://www.haverigg.cumbria.sch.uk)**

**Headteacher: Mrs M Narongchai**

## Attendance matters

24<sup>th</sup> October 2025

Dear parents and carers,

This academic year we have once again had increasing numbers of families taking children out of school for holidays during term time. As you will all be aware, schools must consider enforcement action if a child/young person has 10 or more unauthorised sessions (equivalent to five days). While schools and local authorities will generally offer support to improve attendance first, persistent unauthorised absences or term-time holidays may result in a Fixed Penalty Notice or prosecution.

**As part of our ongoing attendance monitoring and in line with the Cumberland attendance strategy, we will now be passing on attendance casefiles to the local authority where we feel the threshold has been met for fixed term penalty.**

Reminder of Attendance expectations:

- Ensure your child/young person attends every day the school is open; except when a legal reason applies
- Notify the school as soon as possible when your child/young person is unexpectedly absent
- Book any medical appointments around the school day where possible
- Only request leave of absence in exceptional circumstances and do so in advance (please note: family holidays are not generally considered exceptional circumstances and all leave of absence requests are considered at the headteacher's discretion)

Please also be aware that taking your child out of school after registration in the afternoon will still count as an unauthorised session as they are not in school during the afternoon.

Head teacher

## CHANGES TO FINES FOR UNAUTHORISED ABSENCES

With the introduction of the new National Framework for penalty notices, the following changes will come into force for fixed penalty notice fines issued for unauthorised absences recorded by schools after 19 August 2024.

***Fixed Penalty Notices are issued in lieu of prosecution. The decision on whether to issue an FPN or prosecute rests with the Local Authority and is made on a case-by-case basis.***

### **National threshold**

There will be a single, consistent national threshold for when a penalty notice must be considered by all schools in England of 10 sessions (usually equivalent to five full school days) of unauthorised absence within a rolling 10 school week period.

For example: a five-day holiday would meet the national threshold.

The 10-school week period can span different terms or school years.

### **Who may be fined?**

Penalty notice fines are issued to each parent who allows their child/young person to be absent from school.

For example: three siblings absent for term time leave would result in each parent who allowed the holiday receiving three separate fines.

### **First offence**

The first time a penalty notice is issued for an unauthorised term time holiday, the fine amount will be:

£80 per parent, per child/young person if paid within 21 days, increasing to £160 if paid between days 22-28.

### **Second offence (within three years)**

The second time a penalty notice is issued for unauthorised absence, the amount will be: £160 per parent (who allowed the holiday), per child/young person, payable within 28 days.

### **Third offence and any further offences (within three years)**

The third time an offence is committed, a penalty notice will not be issued and local authorities will need to consider other available measures to address the absence concerns.

This may mean that cases are presented before a Magistrate's Court.

Prosecution can result in criminal records and fines of up to £2,500 and/or a term of imprisonment not exceeding three months.

Please note any monies collected through fines come back to Cumberland Council to facilitate attendance support and not to schools.



## **POMS Cluster Attendance Agreement 2025 - 2026**

### **Guidance on authorised term-time pupil absence**

The Education Regulations 2013 [aka, the Regulations] which came into force on 1 September 2013, made it clear that headteachers may not grant any leave of absence during term time unless "exceptional circumstances" prevail. The regulations also state that headteachers should determine the number of school days a pupil can be away from school if they grant a leave request because of "exceptional circumstances".

The fundamental principles for defining "exceptional circumstances" are that they are 'rare, significant, unavoidable and short'.

POMS cluster Headteachers have worked together to agree some guiding principles for headteachers to consider when families request absence during term-time. This will ensure consistency across the cluster and ensure all schools are sending the same message surrounding the importance of attendance at school.

### **Guiding Principles**

1. Term times are for education. Children and families have 175 days off school to spend time together, including weekends and school holidays. Headteachers will rightly prioritise attendance. The default school policy should be that absences will not be granted during term time apart from in "exceptional circumstances".
2. The decision to authorise a pupil's absence is wholly at the headteacher's discretion based on their assessment of and circumstances of each individual request. POMS Headteachers have worked collaboratively to agree a shared approach. Schools in the POMS cluster will follow these agreed principles.
3. If an event can be reasonably scheduled outside of term time, then it will not be authorised. Holidays are, therefore, not considered exceptional circumstances.
4. Absence from school to visit seriously-ill relatives or for bereavement of a close family member are usually considered to amount to 'exceptional circumstances', but for the funeral service not for extended leave.
5. Absences for important religious observances are often considered, but only for the ceremony and not for extended leave. This is intended for one-off situations rather than regular or recurring events
6. Schools may wish to take the needs of the families of service personnel into account if they are returning from long operational tours that prevent contact during scheduled holiday time.
7. Whilst as school settings we must make reasonable adjustments for pupils with special educational needs or disabilities in school time. Regarding attendance, we work closely with our colleagues from our local special schools. In line with their guidance, we would not consider requests that are based on holidays during quieter times.
8. Families may need time together to recover from a trauma or crisis.
9. POMS schools will consider a pupil's historical record of attendance when making absence-related decisions
10. It is important to note that headteachers can determine the length of the authorised absence as well as whether an absence is authorised.
11. Absence will only be authorised where proper request procedures have been followed and the permission given.
12. Tickets and/or other travel arrangements should not be booked prior to discussion with and agreement of the school.
13. Parents and Carers should not confuse telling the school about an absence with having permission.
14. Whether alternative care arrangements have been considered by the parent to limit the time away from school.
15. The impact on any interventions, assessments or referrals being undertaken with the child or family, for example, family support, social care assessments, CAMHS, SEN.
16. The potential impact that the absence will have on the child.

This guidance has been agreed by all schools in the POMS (Partnership of Millom Schools) cluster;

Parkview Nursery School  
Millom Infant School  
Black Combe Junior School  
Haverigg Primary School  
St James' Catholic Primary School  
Thwaites Nursery & Primary School  
Captain Shaw Nursey & Primary School



## Healthy Packed Lunch Policy



### How to pack a well-balanced lunch box - focus on the food groups

To be in-line with the School Food Standards set by the Department for Education, we feel this is a very reasonable packed lunch policy and one which we would like all parents to work towards achieving **one small change at a time**. We do understand that some children struggle with change but, the healthier choices you can gradually make, the better your child's health will be.

#### Packed lunches should include:

- At least one portion of fruit and one portion of vegetables every day.
- Meat, fish, eggs, or a non-dairy protein (e.g. lentils, kidney beans, chickpeas, houmous or falafel) every day.
- Oily fish, such as salmon, at least once every three weeks.
- A starchy food such as any type of bread, pasta, rice, couscous, noodles, potatoes or another cereal every day.
- A dairy food such as milk, cheese, yoghurt, fromage frais or custard every day.
- A drink of water, fruit juice or smoothie (maximum portion 150ml), or semi-skimmed milk or skimmed milk, yoghurt or another milk drink.

#### Packed lunches can occasionally include:

- Meat products such as sausage rolls, individual pies, corned meat and sausages.
- Cakes and biscuits - but encourage your child to eat these as part of a meal and be mindful of appropriate portion sizes.

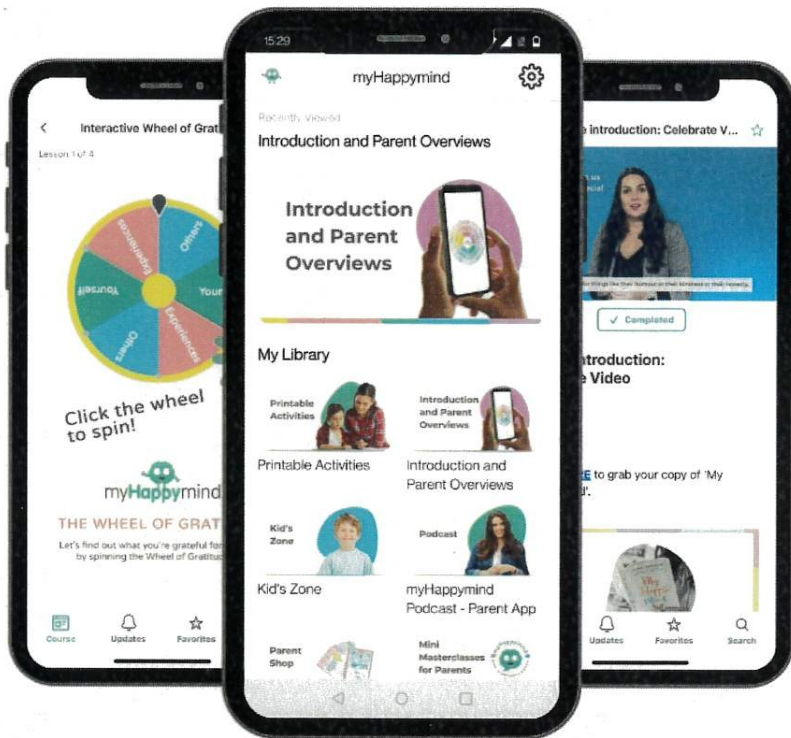
#### Packed lunches should not include:

- Nuts or nut butters (we do have children in school with allergies)
- Salty snacks such as crisps.
- Confectionery such as chocolate bars, chocolate-coated cereal bars, processed fruit bars and sweets.
- Sugary soft drinks, such as squash and fizzy drinks.





# Download your FREE myHappy mind Parent App

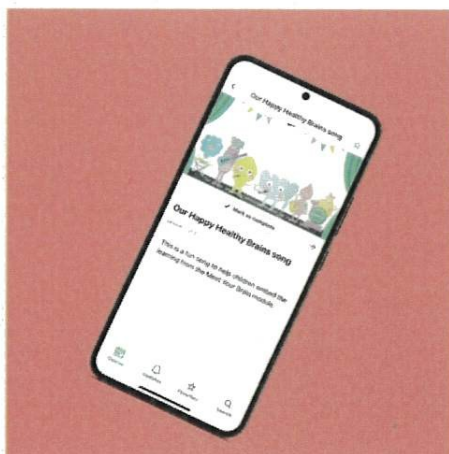


...An online resource to support you and your family to learn more about how you can use myHappy mind to support your child.



**myHappy mind for Parents**

Exclusively for parents with children at a myHappy mind School or Nursery.



Learn all about what your children are learning in school

**myHappy mind Parent App**

YOU WILL NEED THIS AUTHENTICATION CODE TO SIGN UP

112157

MILLOM AMATEUR OPERATIC SOCIETY  
PANTOMIME AUDITIONS

# 'RAPUNZEL, THE PANTOMIME'

By BRADFORD & WEBSTER  
11-13 FEBRUARY 2027

Millom Palladium Theatre

**Monday 6 July**

Juniors (up to Year 6) 6-30pm to 7-30pm

Adult (Year 7 onwards) 7-30pm to 9pm

**Thursday 9 July**

Juniors (up to Year 6) 6-30pm to 7-30pm

Adult (Year 7 onwards) 7-30pm to 9pm

**Sunday 12 July - Auditions**  
for Adult and Junior parts 1-00pm

**Minimum age is school year 2  
(when the pantomime is on)**

**Can't make the auditions**

If you'd like to audition but are unable to attend on the day please contact the Palladium directly via Facebook or by calling 775335. We aim to be as flexible as possible. Please get in touch before 6 July to register your interest if you cannot attend the audition.

So come along everyone and bring your friends. It's going to be a lot of fun.

**We don't want anyone to miss out.**

New and returning Actors/Actresses/Juniors are always welcome. If performing isn't for you why not join our fantastic team of volunteers? There are plenty of opportunities, from sound and lighting to props and front-of-house roles.

Help your local THEATRE continue to thrive.

Everyone is welcome!